



School Bus Safety Tips for Motorists

Catoosa County Policy states that school buses loaded or unloaded drive no more than 40 mph with the exception of field trips. Interstate travel is 55 mph max, no exceptions.

*Red flashing lights on buses indicates students are either entering or exiting the bus.

*Altering a route or schedule to avoid a bus is one way motorists can help improve safety. In doing so, motorists won't find themselves behind a bus and as a result, potentially putting children at risk.

*Reduce speeds in and around school zones.

*Watch and stop for pedestrians — the law applies to all street corners, for both marked and unmarked cross-walks (all street corners) — every corner is a crosswalk.



The danger zone is the twelve foot area that surrounds a stopped school bus. The most dangerous areas are around the left and right tires, the front door and the right rear tires where it is difficult to see students and they are at risk to passing motorist on both the left and right sides of the stopped school bus.

Stay Alive



don't text & drive

**Department of Pupil Transportation
Catoosa County Public Schools**

175 Cassidy Lane
Ringgold, GA 30736

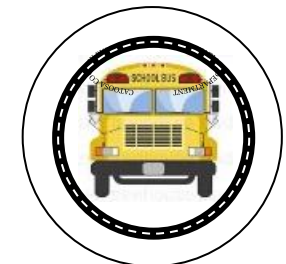
Phone: (706)965-2913

Sharing the Road with School Buses

Working together to keep our children **SAFE!**



Sponsored by:
School Bus Safety Education Team
Department of Pupil Transportation
Catoosa County Public Schools



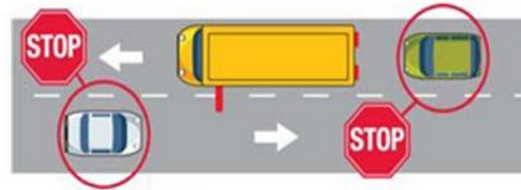
Motorists need to observe traffic safety rules around school buses. First and foremost, they must know and understand the school bus laws in their state. In particular, they must be aware that it is illegal in all 50 states to pass a school bus that has stopped to load or unload students.



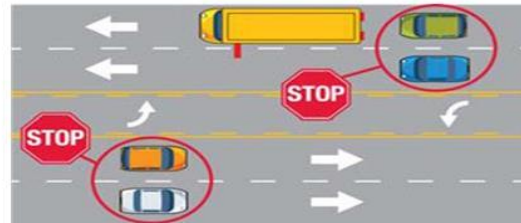
Motorists must learn the “flashing signal light system” that school bus drivers use to alert motorists that they are going to stop to load or unload students:

- Yellow flashing lights indicate the bus is preparing to stop to load or unload children. Motorists should slow down and prepare to stop their vehicles.
- Red flashing lights and extended stop arm indicate that the bus has stopped and that children are getting on or off.

EXAMPLES OF WHEN DRIVERS MUST STOP

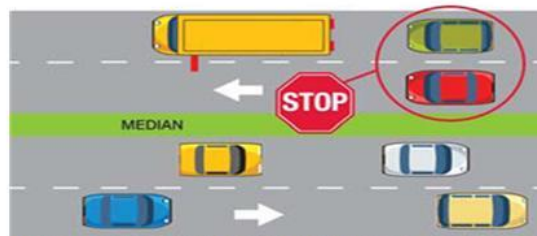


TWO LANE ROAD



ROADWAY DIVIDED ONLY BY LEFT TURN LANE

- Motorists on any highway that has only two travel lanes, one in each direction, must stop for the bus whether approaching from the front or from the rear and remain stopped until the lights are no longer activated or the bus resumes motion.
- Motorists traveling on multi-lane roadways which are divided by a paved median or turning lane, must stop for the bus if overtaking the bus from the front or rear and remain stopped until the lights are no longer activated or the bus resumes motion.



DIVIDED HIGHWAY WITH PHYSICAL BARRIER

- Motorists traveling on multi-lane roadways which are divided by a dirt, grass or barrier median must stop if approaching from the rear. Vehicles traveling in the opposite direction can continue travel using caution.

Each year, the Kansas State Dept. of Education compiles information from all 50 states on school bus fatalities. The National School Bus Loading and Unloading Survey is a collection of fatality accident records provided by the state agencies responsible for school transportation safety and/or accident records. This is a summary of loading and unloading statistics:

During the past 47 years, the largest percentage of fatalities, 73.2% (906 fatalities), occurred to students 9 years of age and under. Total fatalities was 1,238.

In 2016-2017:

- 25% of fatalities were attributed to the school bus. Those involving the “other vehicle” were 75%.

From 2009 to 2017, there were 12 children killed in Georgia.

- 2009-10 school year, Georgia led the nation with 5 of the 13 national fatalities.
- 2010-11 school year, Georgia led the nation with 2 of the 8 national fatalities.
- 2011-12 school year, Georgia once again led the nation with 2 of the 9 national fatalities occurring at our bus stops.
- 2012-13 school year, Georgia experienced 1 out of the 9 national fatalities.
- 2013-14 school year, Georgia experienced 2 out of the 10 national fatalities.
- 2014-15 school year, Georgia experienced ZERO fatalities!
- 2015-16 school year, Georgia again experienced ZERO fatalities!!
- 2016-17 school year, Georgia experienced ZERO fatalities!!!