

SECTION 00 11 13 - INVITATION TO BID

LAKEVIEW – FORT OGLETHORPE THEATER ADDITION FURNISHINGS SPECIFICATIONS AND MATERIAL REQUIREMENTS

Sealed Bids for the Furnishings package for Lakeview Fort Oglethorpe High School Theater Addition, Ringgold, Georgia, will be received in the Board Room, Central Office, Catoosa County, Georgia, 307 Cleveland Street, Ringgold, Georgia 30736, until 9:00 am on October 16, 2023 at which time they will be opened publicly and read aloud.

There will not be a pre-bid conference.

Furniture Specifications and Plans are available for inspection in the Central Office of the Board of Education at 307 Cleveland Street, Ringgold, Georgia 30736. The hours are Monday through Friday, 7:30 am until 4:30 pm.

Furniture Contract documents will be issued to interested Bidders by the office of the Architect, Derthick, Henley & Wilkerson, Architects, 1001 Carter Street, Chattanooga, Tennessee. All questions regarding this project should be directed to Ceci McCoy at (423) 266-4816.

Bids shall be submitted on the proposal form furnished by the Architect, and must be submitted in a sealed envelope, clearly marked as to the job and the submitting Bidder.

No bid may be withdrawn for a period of Sixty (60) days from the above listed date, except as otherwise provided by law.

The Owner reserves the right to accept or reject any and all proposals and to waive any informalities therewith. The Owner reserves the right to award portions of the Furniture package to multiple Bidder / Vendors.

The successful bidder will be required to execute a contract on AIA Standard Form of Agreement Between the Owner and Contractor.

END OF SECTION

ADDENDUM NO. 1

**Catoosa County
LFO Theater – Furniture, Finishes & Equipment
Derthick Henley & Wilkerson Architects**

Date: 26 September 2023

File: 8203-A

The following amendments to the specifications and/or revisions to the drawings shall be a part of the contract documents. Bidders, therefore, shall consider them when preparing cost estimates, and the contractors shall be bound by them.

SPECIFICATION CLARIFICATION(S) FOR VENDOR QUESTIONS:

- Question: KI has a 30% price increase on the 600 series stools. Should the bids include that price increase or not?
Answer: Include price increase. If project is approved and ordered before increase occurs, price can be adjusted down – but we cannot incur an increase to the bid total due to a price increase.

- Question: Architex – Hive is not approved for the Whimsy Ottoman. And custom wood finishes are not an option. What would you like to do?
Answer: New fabric will be selected and coordinated with the awarded bidder. Use Hive pricing for COM fabric. Use standard black glides for ottomans.

- Question: Specified laminates for CG01 are not standard options within National. Would you like them priced as a special?
Answer: No. See updated finishes on attached spec sheet.

REVISED SPECIFICATIONS FOR ADDENDUM 1, September 27, 2023 viewable on pages 35 & 36 of this packet: Items #

CG 01
S 07

DRAWINGS:

ADDENDUM NO. 2

**Catoosa County
LFO Theater – Furniture, Finishes & Equipment
Derthick Henley & Wilkerson Architects**

Date: 4 October 2023

File: 8203-A

The following amendments to the specifications and/or revisions to the drawings shall be a part of the contract documents. Bidders, therefore, shall consider them when preparing cost estimates, and the contractors shall be bound by them.

SPECIFICATION CLARIFICATION(S) FOR VENDOR QUESTIONS:

- Question: Specified laminates for S 06 are not standard options within National. Would you like them priced as a special?

Answer: No. See updated finishes on attached spec sheet.

- Question: The image and specification for M 03 does not match the manufacturer and series that is given on the sheet. Would you like to specify what is pictured?

Answer: Yes. See updated manufacturer and series on attached sheet.

REVISED SPECIFICATIONS FOR ADDENDUM 2, October 4, 2023 viewable on pages 37 & 38 of this packet: Items #

S 06

M 03

DRAWINGS:

ALTERNATES:

The following products have been approved as alternates for the product indicated.

S02 – Flex-Space Stacking Chair, 17.5”, Gray

S03 – Flex-Space Height Adjustable Stool, 21-31” height, Modern Maple

S08 – Flex-Space Stacking Chair, 17.5”, Gray

S09 – Flex-Space Height Adjustable Stool, 21-31” height, Modern Maple

T01 – Flex-Space Mobile Student Desk, 28” w. x 21” d., Modern Maple



REQUEST FOR PROPOSAL

FURNISHINGS SPECIFICATIONS AND MATERIAL REQUIREMENTS

**CATOOSA COUNTY SCHOOLS
LAKEVIEW FORT OGLETHORPE HIGH SCHOOL
RINGGOLD, GEORGIA**

File No. 8203-A

Date : September 15, 2023

D H & W A r c h i t e c t s

**PROPOSAL FORM
CATOOSA COUNTY SCHOOLS
LAKEVIEW FORT OGLETHORPE HIGH SCHOOL
FURNITURE BID PACKAGE**

_____ proposes complete lump sum pricing for miscellaneous furniture for the Catoosa County Schools Lakeview – Fort Oglethorpe High School Theater per plans and specifications prepared by Derthick, Henley & Wilkerson Architects for the Furniture Bid Package dated September 15, 2023 (furn. specs.) and September 15, 2023 (furn. plans), and attached drawings and specifications enumerated below.

Addendum Received: _____

Having carefully examined the specifications lists dated September 15, 2023, and the Drawings dated September 15, 2023 and Addendum No. (s) shown above, as well as the premises and conditions affecting the work, the undersigned proposes to furnish all services, labor, and material called for by them for the entire work, in accordance with said documents for the sum of:

Total Bid : _____ dollars

\$ _____

- I. Unit Prices: Each bidder will be required to provide as an attachment to their bid, an itemized cost breakdown, enumerating the cost of each furniture unit. Each bidder is also to include all final furniture cost totals, including shipping and delivery costs. The Owner reserves the right to add or delete furniture items with the selected bidder at the itemized costs listed, up to the date of October 27, 2023. Each bidder is to hold their itemized unit costs submitted at time of bid for all furniture until October 27, 2023.
- II. Each Bidder must use base bid pricing for all project sections.
- III. Withdrawal of Proposal: The undersigned agrees that this proposal may not be revoked or withdrawn after the time set for the opening of bids.
- IV. Any furniture which arrives before the delivery dates shown below is to be stored at the selected bidder's warehouse facilities at no charge.
- V. Bidders are responsible for determining lead times and submitting substitutions for approval if a specified product cannot be received by the delivery date listed below.

Clarification:

Sales Tax : The Catoosa County School system is not subject to sales and/or use tax.

Delivery : All furniture is to be delivered no earlier than December 25, 2023 and no later than January 5, 2024

Drawings Issued as part of Miscellaneous Furniture Bid Package.

Full Size

Revision Date

- ID 101-A – 1st Floor Furniture Plan Area A
- ID 101-B – 1st Floor Furniture Plan Area B
- ID 102-A – 2nd Floor Furniture Plan Area A

Specifications Issued

Pages

Section 12622 - Miscellaneous Furniture	3
Section 12623 – Furniture Specification List	2
Individual Furniture Specifications	19

Bidder Name _____

Address: _____

Tel. No. _____

Proposal Signature _____

Printed Name _____

Title _____

Catoosa County Schools
LAKEVIEW – FORT OGLETHORPE HIGH SCHOOL
Ringgold, Georgia
Furniture
Special Conditions

1. Sealed bids will be publicly opened. Owner retains the right to reject all bids. Owner will award the job based on pricing, qualifications, product aesthetics and performance, delivery schedule, and installation. Owner reserves the right to award multiple Vendors portions of the Furniture package.
2. Drawings and Specifications listed below are issued as part of this bid package.

<u>Full Size</u>	<u>Description</u>	<u>Issued Date</u>
ID 101-A	1 st Floor Furniture Plan Area A	September 15, 2023
ID 101-B	1 st Floor Furniture Plan Area B	September 15, 2023
ID 102-A	2 nd Floor Furniture Plan Area A	September 15, 2023

<u>Specifications Issued</u>	<u>Pages</u>
Section 12622 - Miscellaneous Furniture	3
Section 12623 – Furniture Specification List	2
Individual Furniture Specifications	19

SECTION 12622 - MISCELLANEOUS FURNITURE

PART I - GENERAL

1.01 SUMMARY

- A. This section includes manufacturing and furnishing new miscellaneous mobile administration, lounge, classroom, and general school furniture in the Lakeview – Fort Oglethorpe High School Theater project.

1.02 ADDITIONAL FURNITURE UNITS

- A. Bidder shall agree to hold price including discount, for 60 days from receipt of bids.
- B. The Owner reserves the right to change or add/delete furniture options at submitted price quotations, up to the date of October 27, 2023

1.03 FURNITURE DESCRIPTION

- A. Quality Standard: See Furniture Specifications and Furniture Plans dated September 15, 2023
- B. The following descriptions define required characteristics for the furniture units:
 - 1. All mobile furniture is to be freestanding and not attached to the floor, wall, or ceiling in any manner unless noted otherwise. Units are to be installed on top of floor finishes.
 - 2. Furniture specified to be installed and attached to the floor shall be installed according to manufacturer's instructions by the furniture contractor.
- C. Optional Submittal: As an option, substitute furniture will be accepted for review. All alternate furniture must meet or exceed the specifications and qualifications shown in Section 12622 and individual furniture specifications. All alternates must be approved prior to bidding.
 - 1. Supply specifications and cut sheets on any item which bidders want to submit as an alternate at least 10 days prior to receipt of bids. The Architect reserves the right to refuse any and all alternate submittals.

1.04 SUBMITTAL

- A. After award of contract, provide product data including manufacturer's detailed materials and fabrication specifications. Include catalog cuts of hardware, fasteners, and other data as required. Provide wood samples showing proposed standard stain color and finish, and other miscellaneous finishes for Architect's review as part of the submittal process.

1.05 QUALITY ASSURANCE

- A. Vendor Qualifications: A single firm specializing in the delivery and installation of freestanding commercial furniture, and with at least 3 years successful experience in applications similar to requirements for this project.

1.06 DELIVERY, STORAGE AND HANDLING

- A. The furniture contractor is to receive and inspect the furniture for damage before installation. The furniture contractor will be responsible for the delivery and installation of the furniture from his facility to the project jobsite.
- B. The furniture contractor is to deliver the furniture units to a staging area designated by the Owner and install at the locations shown on the drawings.

1.07 WARRANTY

- A. General Warranty: Furniture warranty specified in this Article shall not deprive Owner of other rights Owner may have under other provisions of the Contract Documents and shall be in addition to, and run concurrent with, other warranties made by the Building Contractor under requirements of the Contract Documents.
- B. Furniture Warranty: Written warranty, signed by the furniture manufacturer, agreeing to repair or replace furniture that does not comply with requirements due to manufacturing and factory defects, or that fails within specified warranty period. Warranty does not apply to furniture damaged by accident, abuse, neglect or misuse, or alterations.
 - 1. Warranty Period (Desks, Tables, Chairs, and Other Misc. Furniture): Limited lifetime warranty from date of purchase.

PART II - PRODUCTS**2.01 FABRICATION, GENERAL**

- A. Furniture and other miscellaneous hardware items shall be manufacturer's standard units except as noted.

2.02 TECHNICAL REQUIREMENTS

- A. Furniture must be as specified or equal to that shown on specification list.
- B. Finishes are to match the specified finishes in color, texture, and quality. The furniture finishes are to be selected by the Architect after award of the contract. Grades and types of finishes for each furniture piece are shown in the furniture specifications in order to set a standard for the material finishes to be selected. Any alternate furniture manufacturers proposed will match these finishes as close as possible to the Architect's satisfaction.
- C. Flame Spread Requirements
 - 1. All upholstered furniture is to meet the following tests:
 - a. California Technical Bulletin 133, Flammability Test Procedure for Seating Furniture for Use in Public Occupancies, January 1991 edition
 - b. Underwriters Laboratories UL1975, Standard for Fire Tests for Foamed Plastics Used for Decorative Purposes
 - c. NFPA 101 Life Safety Code, 2000 edition
- D. Miscellaneous Mobile Administration, Classroom, and General School Furniture

1. Table tops are to be fabricated of a high pressure plastic laminate on the top surface with a mechanically and chemically bonded PVC or T-mold edging on solid core warp-resistant construction. The table top center core is to be high density fiberboard. The bottom of the table top is to be clad with a high-pressure phenolic laminate backer sheet balanced with the top laminate surface. Table tops are attached to the table frames with deep thread screws; expansion rivets are not to be used.
2. Tables are to be fabricated with powder-coated all-steel frames, unless otherwise noted on the individual furniture units shown in these specifications.
3. All structural frame connections are to be steel to steel.
4. Furniture is to meet or exceed NEMA specifications.
5. Finishes are to match the specified materials shown on the specification list.
6. All chair products are to comply with ANSI/BIFMA X5.1-2002 and ISO 14001:1996 standards.
7. Furniture specifications listed under these 2.02 Technical Requirements are for general clarification and are to serve as a quality standard unless noted differently as part of the particular individual specifications for the specified furniture listed and described under the Miscellaneous Furniture Legend.

PART III - EXECUTION

3.01 INSTALLATION

- A. Install furniture, and furniture components as shown on the drawings and specification list after floor covering is complete. Coordinate work with other affected trades. Avoid damage to installed work. Floor protection is required along delivery travel path(s)
- B. Repair damaged or defaced work caused by this contract or replace with new work, as acceptable to the Architect.
- C. Install furniture so that all individual parts and pieces are secured together tight, rigid, level, and plumb according to manufacturer's instructions. Furniture which is not located as shown on the drawing shall be repositioned until acceptable to the Architect.

END OF SECTION

SECTION 12623 - FURNITURE SPECIFICATION LIST

Catoosa County Schools

Lakeview – Fort Oglethorpe High School

Ringgold, Georgia

September 15, 2023

Furniture Specification List

TAGS

DESCRIPTION

Casegoods

CG01	National, Manuever, Teacher Desk
CG02	National, Epic, Office

Chairs

S01	Sit On It, Lumin, Instructor Chair
S02	Sit On It, Lumin, Classroom Chair
S03	KI, 600 Series, Art Classroom Chair
S04	Global, Vion, Task Chair
S05	Global, Vion, Guest Chair
S06	National, Fringe, Lobby Bench
S07	National, Whimsy, Lobby Ottoman
S08	Sit On It, Lumin, Dressing Room Chair
S09	KI, 600 Series, Light Room Stool
S10	Sit On It, Lumin, Sound Room Chair
S11	Wenger, Student Music Chair

Tables

T01	Global, Zook, Student Desk
T02	KI, Rukus, Art Table

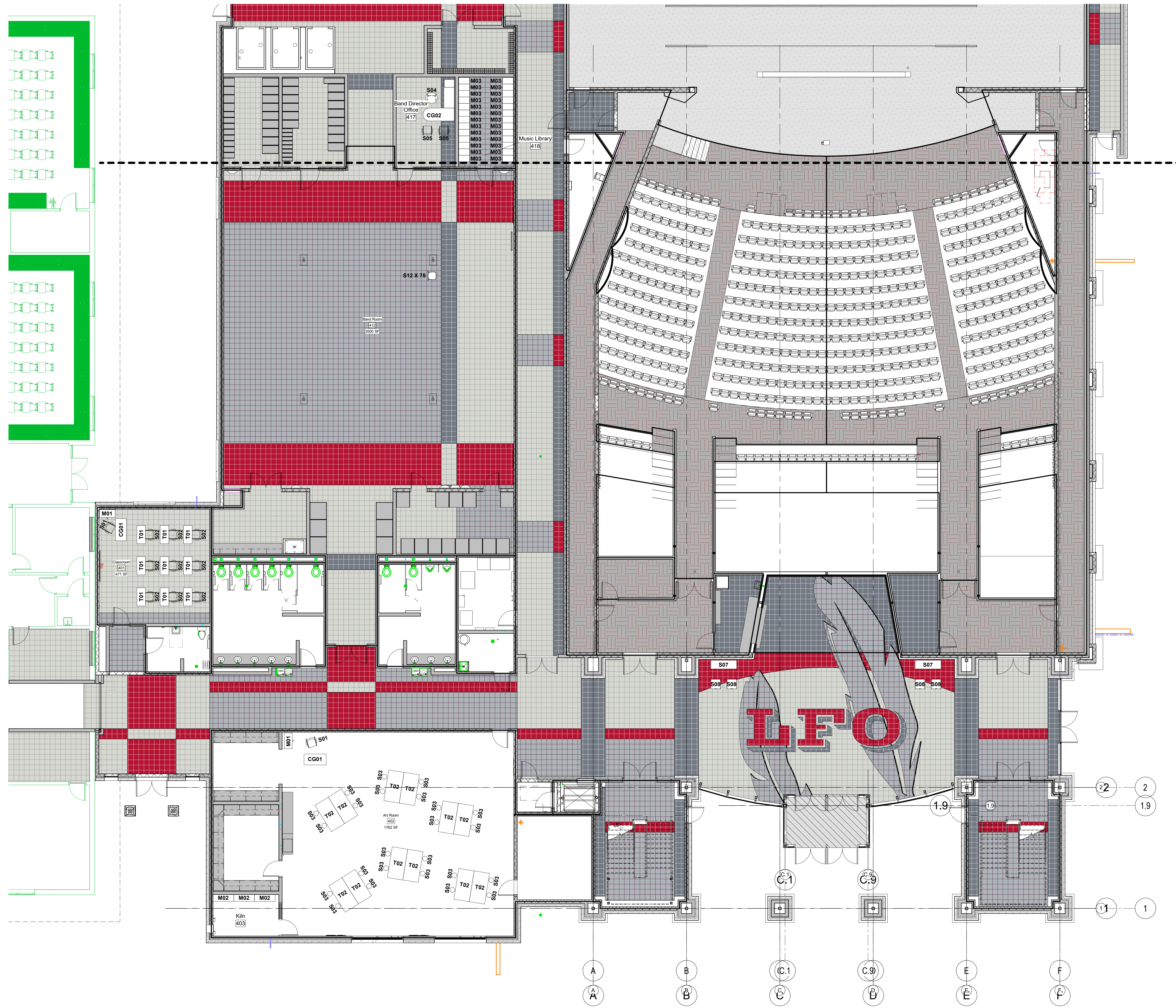
Miscellaneous

M01	National, Waveworks, Lateral File
M02	Nexel, Kiln Shelf
M03	National, Waveworks, Vertical File

Catoosa County Schools
Lakeview – Fort Oglethorpe High School
Miscellaneous Furniture
Specification List

General furniture notes:

1. The manufacturers and products listed are to serve as a quality standard and specification requirement. Other alternate manufacturers and/or companies may be submitted for consideration by the Architect 10 days prior to bidding. Architect response will be given 5 days prior to bidding.
2. Refer to the attached individual specifications for product, quantity and location information. Refer to Furniture Plans to verify quantities.



Catoosa County
Public Schools

Lakeview-Fort
Oglethorpe High
School Theater

1850 Battlefield Pkwy
Fort Oglethorpe, GA
30742

Facility Code 623-1052

Date: 09/15/23
Drawn: Author
File: 8203-A

Revisions:

Key Plan

ALL DRAWINGS AND WRITTEN MATERIAL CONSTITUTE ORIGINAL WORK OF THE ARCHITECT AND MAY NOT BE DUPLICATED, USED, OR DISCLOSED WITHOUT CONSENT OF THE ARCHITECT.
© 2022 DHW ARCHITECTS. ALL RIGHTS RESERVED

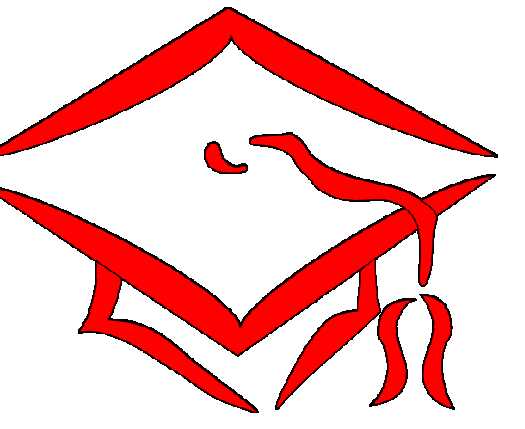


Title:
**1st Floor Furniture
Plan - Area A**

Scale:
Sheet No.

A18 1st Floor Furniture Plan - Area
ID 101-A 1/8" = 1'-0" **A**

ID 101-A



Catoosa County Public Schools

Lakeview-Fort Oglethorpe High School Theater

1850 Battlefield Pkwy
Fort Oglethorpe, GA
30742

Facility Code 623-1052

Date: 09/15/23

Drawn: Author

File: 8203-A

Revisions:

Key Plan

ALL DRAWINGS AND WRITTEN MATERIAL CONSTITUTE ORIGINAL WORK OF THE ARCHITECT AND MAY NOT BE DUPLICATED, USED, OR DISCLOSED WITHOUT CONSENT OF THE ARCHITECT.
© 2022 DH&W ARCHITECTS. ALL RIGHTS RESERVED.

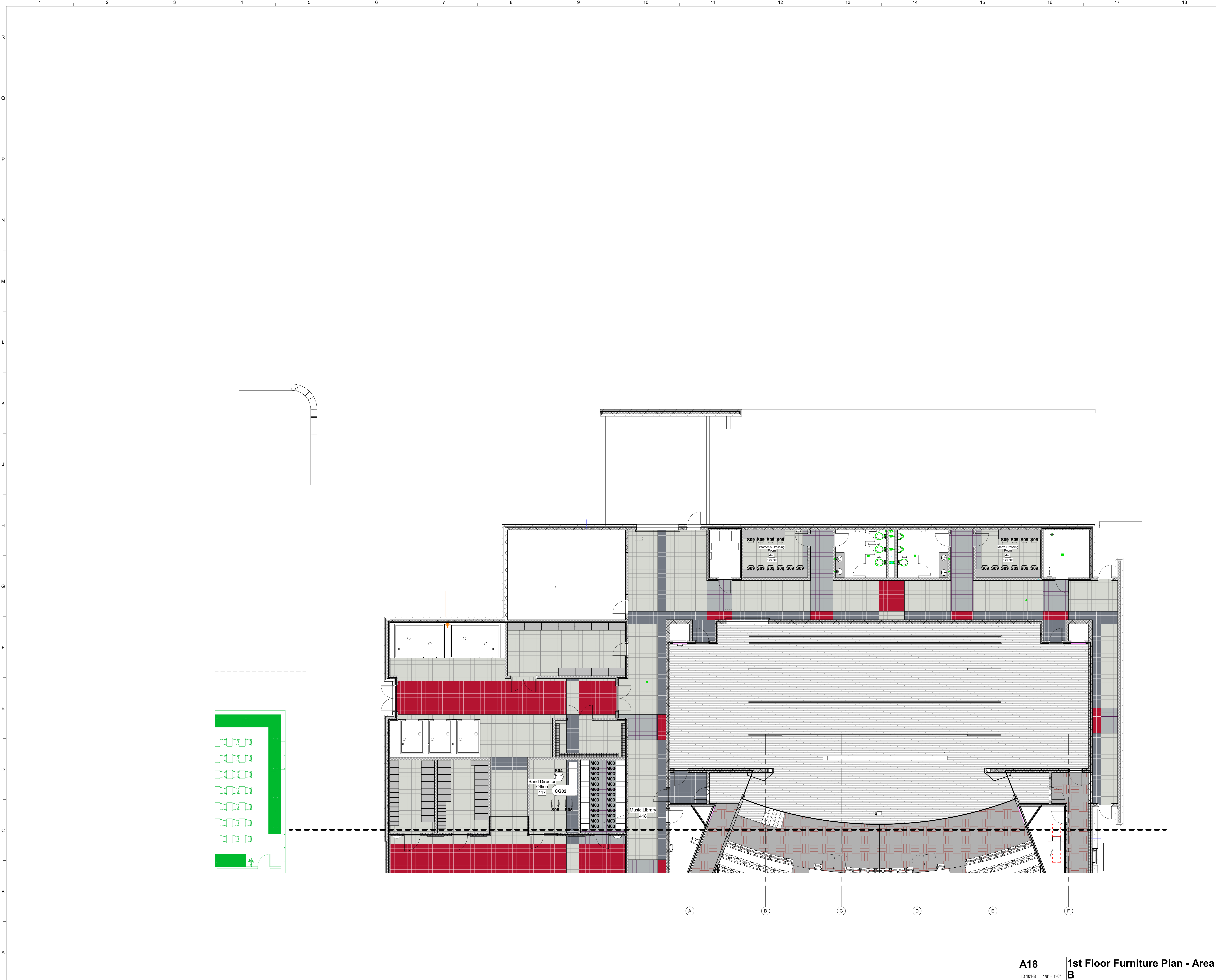


Title:
1st Floor Furniture Plan - Area B

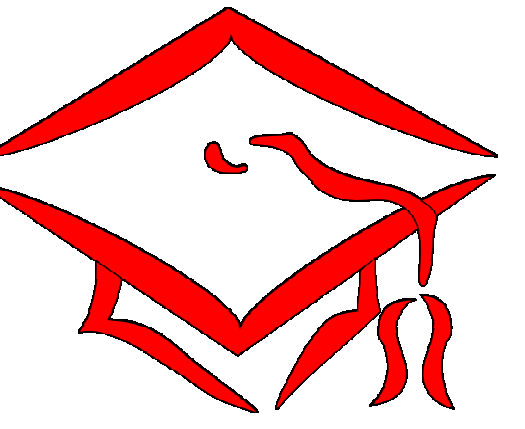
Scale:

Sheet No.

ID 101-B



A18	1st Floor Furniture Plan - Area B
ID 101-B	1/8" = 1'-0"



Catoosa County Public Schools

Lakeview-Fort Oglethorpe High School Theater

1850 Battlefield Pkwy
Fort Oglethorpe, GA
30742

Facility Code 623-1052

Date: 09/15/23

Drawn: Author

File: 8203-A

Revisions:

Key Plan

ALL DRAWINGS AND WRITTEN MATERIAL CONSTITUTE ORIGINAL WORK OF THE ARCHITECT AND MAY NOT BE DUPLICATED, USED, OR DISCLOSED WITHOUT CONSENT OF THE ARCHITECT.
© 2022 DH&W ARCHITECTS. ALL RIGHTS RESERVED.

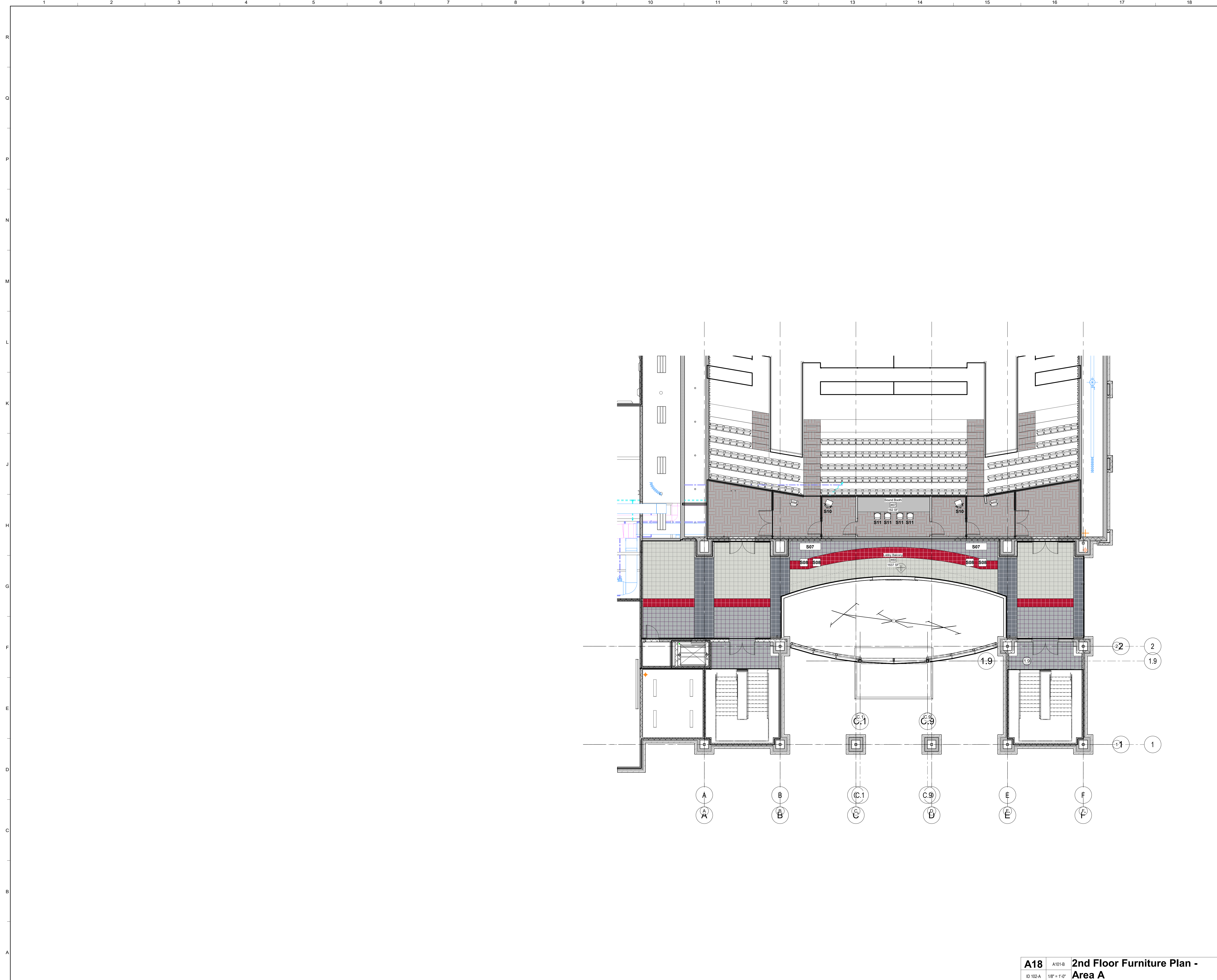


Title:
2nd Floor Furniture Plan - Area A

Scale:

Sheet No.

ID 102-A



A18	A101-B	2nd Floor Furniture Plan - Area A
ID 102-A	1/8" = 1'-0"	

LFO THEATER TABLE OF CONTENTS

Case Goods (CG __)

Item Number	Item	Specified Product	Quantity
CG01	Instructor Table	National, Maneuver	2
CG02	Teacher Desk	National, Epic	1

Seating (S __)

Item Number	Item	Specified Product	Quantity
S01	Instructor Chair	Sit On It – Lumin	1
S02	Classroom Chair	Sit On It – Lumin	9
S03	Art Classroom Stool	KI – 600 Series	24
S04	Task Chair	Global – Vion	1
S05	Guest Chair	Global – Vion	2
S06	Lobby Bench	National – Fringe	4
S07	Lobby Ottoman	National – Whimsy	8
S08	Dressing Room Chair	Sit On It – Lumin	20
S09	Lighting Room Stool	KI – 600 Series	2
S10	Sound Room Chair	Sit On It – Lumin	4
S11	Band Room Chair	Wegner – Student Musician Chair	75

Tables (T __)

Item Number	Item	Specified Product	Quantity
T01	Student Desk	Global – Zook	9
T02	Art Room Table	KI – Ruckus	12

Miscellaneous (M __)

Item Number	Item	Specified Product	Quantity
M01	Teacher Storage	National – Waveworks	2
M02	Kiln Shelf	Nexel, Chrome Shelf	3
M03	Band Storage	National – Waveworks	26



Instructor Table
 Manufacturer: National
 Series: Maneuver

Item Number: CG01

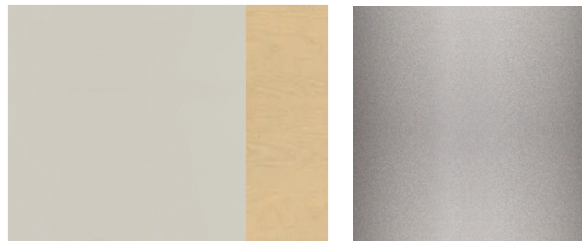
Quantity : 2

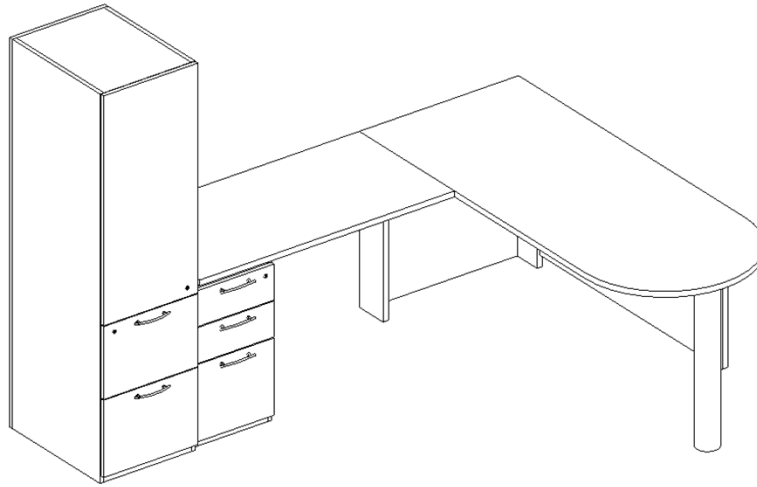
Locations :
 1 per room: 401, 402*

30" x 60" BBF Desk – 29N3060DTRM1L
 Lectern – 29N2418LCL
 Modesty Panel – NAC3012MPA
 Silver lock on BBF drawers

*product numbers shown for left configuration, confirm left/right hand configurations as shown on plan, indicated by * on locations

Finish(es) :
 Laminate: Fusion maple by Wilson art (storage)
 Laminate 2: Willow Gray by Global (Top)
 Hardware/Legs: Platinum Metallic
 Edge: Softened PVC (V)





Teacher Desk
Manufacturer: National
Series: Epic

Item Number: CG02

Quantity : 1
Locations : 417 (L)

30 x 72 D Worksurface with modesty panel–
25N3072DULFL
Metal Post Leg – NAC0428SFRNB
Return with Storage Ped – 25N2448RLEFL1
Satin Nickel racetrack grommet (locate at return side of
30” x 72” worksurface) – G11SNL
Storage Tower – 25N1867VHF2L

*provide all manufacturer recommended supports,
stiffeners and hardware
*adjust product numbers for left / right hand offices as
needed

Finish(es) :
Laminate: Natural Maple
Hardware/Legs: Platinum Metallic
Edge: Softened PVC (V)
Pulls: Lever





Instructor Chair
Manufacturer: Sit On It
Series: Lumin

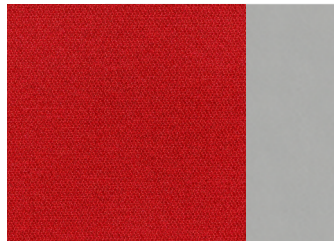
Item Number: S01

Quantity : 2

Locations : 401, 402

Task Chair – 1012 FT3
Upholstered Seat – US
Frame finish – Black FC1
Armless – A0
Black Base – B17
Hard Floor Casters – C14

Finish(es) :
Plastic: Sterling by Sit on It
Base: Black B17 by Sit on It
Upholstery: Infinity in Macintosh by Momentum





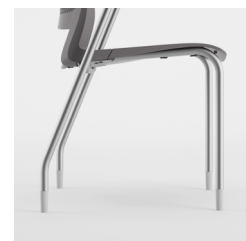
Classroom Chair
Manufacturer: Sit On It
Series: Lumin

Item Number: S02

Quantity : 9
Locations : 401 (x9)

Four Leg Side Chair 1011 FT1
Armless A0, poly shell PS
Silver Frame FC2
Floor Saver Glides GL3

Finish(es) :
Plastic: Sterling by Sit on It
Hardware/Legs: Silver FC2





Art Classroom Stool
Manufacturer: KI
Series: 600 Series

Item Number: S03

Quantity : 24

Locations : 402

Adjustable Height Stool
Wood seat
19" – 27" seat height

Finish(es) :
Seat: Wood (Monticello Maple on Maple)
Base: Black





Task Chair
Manufacturer: Global
Series: Vion

Item Number: S04

Quantity : 1

Locations :

1 per room: 417*

Mesh back, synchro tilt task chair – 6322-3
Height and Width Adj Arms – AS
Sliding seat depth adj – MD
Lumbar Pad – LS

Standard dual wheel carpet casters (unless noted otherwise)

*indicates hard surface casters required for chairs in that room (C9R)

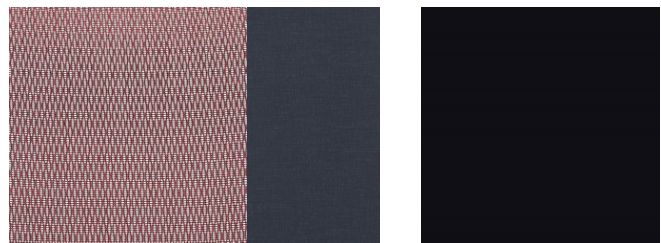
Finish(es) :

Back Frame: Night BLK Plastic by Global

Frame/Legs: Night BLK Plastic by Global

Back Mesh: Vion Mesh in Black Cherry by Global

Seat Upholstery: Nomad in NO-306 Gray by Morbern (associated with global)





Guest Chair
Manufacturer: Global
Series: Vion

Item Number: S05

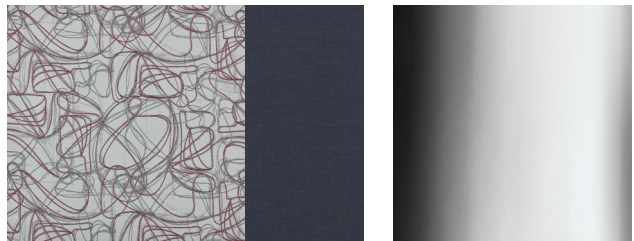
Quantity : 2

Locations :
2 per room: 417*

Armless, upholstered back guest chair – 6334

Standard Glides (unless noted otherwise)
*indicates hard surface glides required for chairs in that room (NM)

Finish(es) :
Back Frame: Black BLK
Frame/Legs: Chrome CHM
Back Upholstery: Awe in Cherise by Pallas
Seat Upholstery: Nomad in NO-306 Gray by Morbern
(associated with global)





Lobby Bench
Manufacturer: National
Series: Fringe

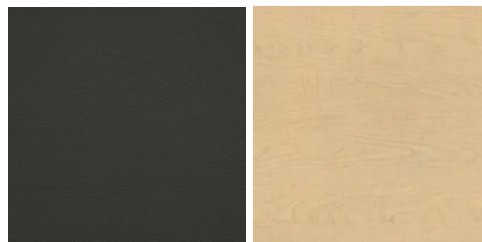
Item Number: S06

Quantity : 4

Locations : Lobby, Lobby Balcony

70" Upholstered Bench N93B3S71

Finish(es) :
Seat Upholstery: Holy Cow in Thunderstorm by Pallas
Hardware/Legs: WilsonArt Fusion Maple





Lobby Ottoman
Manufacturer: National
Series: Whimsy

Item Number: S07

Quantity : 8

Locations : Lobby, Lobby Balcony

36" Round Static Ottoman N66RD36G

Finish(es) :
Ottoman Top: Haven in Flame by Pallas
Ottoman Sides: Hive in Sequoia by Architex
Hardware/Legs: Fusion maple by Wilsonart





Dressing Room Chair
Manufacturer: Sit On It
Series: Lumin

Item Number: S08

Quantity : 20

Locations : 445 (x10), 448 (x10)

Four Leg Side Chair 1011 FT1
Armless A0, poly shell PS
Silver Frame FC2
Floor Saver Glides GL3

Finish(es) :
Plastic: Sterling SC18 By Sit on It
Hardware/Legs: Silver FC2





Lighting Room Stool
Manufacturer: KI
Series: 600 Series

Item Number: S9

Quantity : 2

Locations : 402

Adjustable Height Stool
Wood seat
19" – 27" seat height

Finish(es) :
Seat: Wood (Monticello Maple on Maple
Base: Black





Sound Room Chair
Manufacturer: Sit On It
Series: Lumin

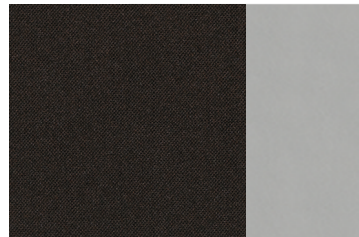
Item Number: S10

Quantity : 4

Locations : 467

Task Chair – 1012 FT3
Upholstered Seat – US
Frame finish – Black FC1
Armless – A0
Black Base – B17
Hard Floor Casters – C14

Finish(es) :
Plastic: Sterling SC18 By Sit on It
Base: Black SC1 by Sit on It
Upholstery: Clover Cloth in Jet by Momentum





Band Room Chair
Manufacturer: Wenger
Series: Student Musician Chair

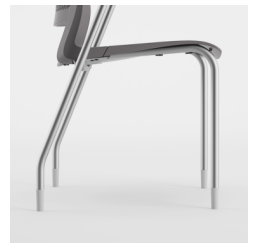
Item Number: S11

Quantity : 75

Locations : 412

Student Chair
Height: 17.5 seat height

Finish(es) :
Chair: Black
Hardware/Legs: Black





Student Desk
Manufacturer: Global
Series: Zook

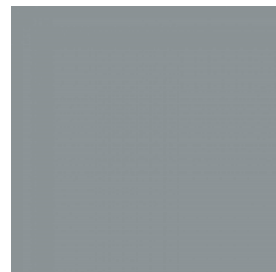
Item Number: T01

Quantity : 9

Locations : 401

36" x 20" rectangle desk – ZKR3024L
High pressure laminate
1.5" round legs
2.5" radius edges
Leveling glides

Finish(es) :
Laminate: Clear Maple by Global
Edge: 2mm thick edge band in clear maple by Global
Legs: 2- Tungsten by Global





Art Room Table
Manufacturer: KI
Series: Ruckus

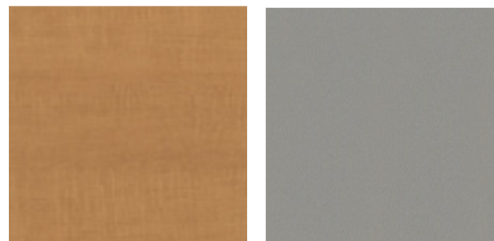
Item Number: T02

Quantity : 12

Locations : 402

30" x 54" work table – ZKR3024L
High pressure laminate top
Powdercoat metal base / storage
Cubby storage, no doors
Locking casters

Finish(es) :
Laminate: Monticello Maple (Available thru KI)
Edge: Monticello Maple (available thru KI)
Base: Starlight Sliver Metallic





Teacher Storage
Manufacturer: National
Series: Waveworks

30" wide, 4 drawer high metal filing cabinet –
WW1830LFF4M
Counterweight – WW36CW2M
Random Lock Core

Item Number: M01

Quantity : 2

Locations :
1 per room: 401, 402

Finish(es) :
Metal: Platinum Metallic





Kiln Shelf
Manufacturer: Nexel
Series: Chrome Wire Shelving

Item Number: M02
Quantity : 3
Locations : 403

48" wide, 18" deep, 63" high, 5 shelf high
wire rack– WBB2333183

800 pound capacity

Open wire shelves for air circulation

Levelers

Adjustable shelves

Finish(es) :
Chrome





Teacher Storage
Manufacturer: National
Series: Waveworks

Item Number: M03

Quantity : 26

Locations : 418

15" wide, 5 drawer high metal filing cabinet –
S7V/15305DFB
No Lock

Finish(es) :
Metal: Starlight Silver Metallic





Instructor Table
 Manufacturer: National
 Series: Maneuver

Item Number: CG01

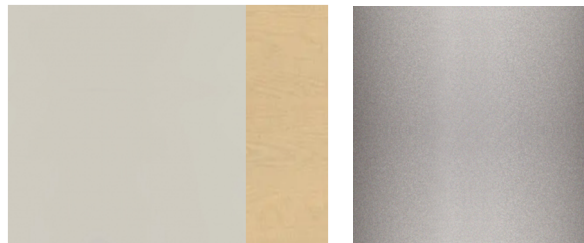
Quantity : 2

Locations :
 1 per room: 401, 402*

30" x 60" BBF Desk – 29N3060DTRM1L
 Lectern – 29N2418LCL
 Modesty Panel – NAC3012MPA
 Silver lock on BBF drawers

*product numbers shown for left configuration, confirm left/right hand configurations as shown on plan, indicated by * on locations

Finish(es) :
 Laminate: Natural Maple (National Standard) (storage)
 Laminate 2: Designer White (National Standard) (top)
 Hardware/Legs: Platinum Metallic
 Edge: Softened PVC (V)





Lobby Ottoman
Manufacturer: National
Series: Whimsy

Item Number: S07

Quantity : 8

Locations : Lobby, Lobby Balcony

36" Round Static Ottoman N66RD36G

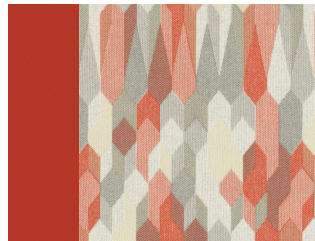
Finish(es) :

Ottoman Top: Haven in Flame by Pallas

Ottoman Sides: Hive in Sequoia by Architex*

**Fabric pending reselection due to specified fabric not being approved by manufacturer. Use COM price of specified fabric for bid purposes. New fabric selection will be coordinated with awarded bidder.

Hardware/Legs: Standard Glides





Teacher Storage
Manufacturer: KI
Series: 700

Item Number: M03

Quantity : 26

Locations : 418

15" wide, 5 drawer high metal filing cabinet –
S7V/15305DFB
No Lock

Finish(es) :
Metal: Starlight Silver Metallic





Lobby Bench
Manufacturer: National
Series: Fringe

Item Number: S06

Quantity : 4

Locations : Lobby, Lobby Balcony

70" Upholstered Bench N93B3S71

Finish(es) :
Seat Upholstery: Holy Cow in Thunderstorm by Pallas
Hardware/Legs: Natural Maple (National Standard)

